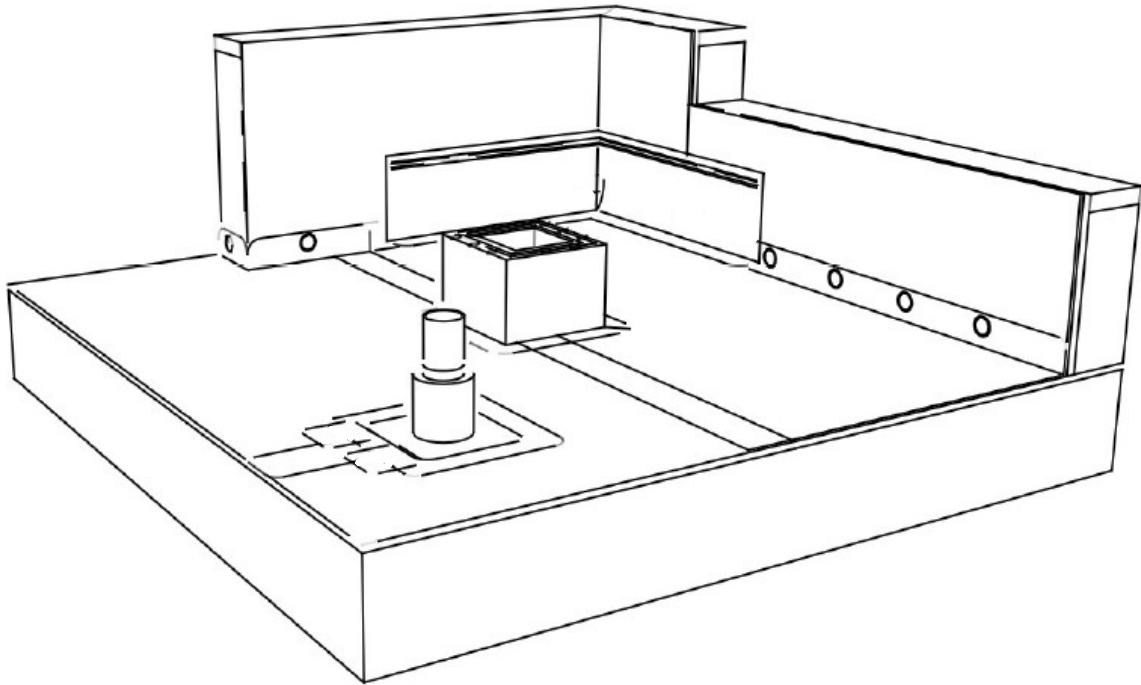




NRCA
PROCertification®

PROCertification® Thermoplastic Systems Installer Sample Performance Exam Assignment



PROCertification candidates are encouraged to know common thermoplastic roof system details practiced in the U.S. NRCA provides this **Thermoplastic Sample Assignment** for candidates to review and practice; they may be asked to perform a similar detail during the assessment to earn their professional designation of PROCertified® Thermoplastic Systems Installer. Candidates should set a goal of completing the sample assignment in three hours.

The assessment is a timed event where both quality and productivity are important. The qualified assessor can answer any questions before the exam.

**The images shown depict specific details the assessor may ask the installer to perform. They do not in any way represent how an installer would typically lay out a real job where these details may be different. The purpose of this assignment is to verify an installer has the ability to perform these skills practiced nationwide.*

Part I - Safety Assessment

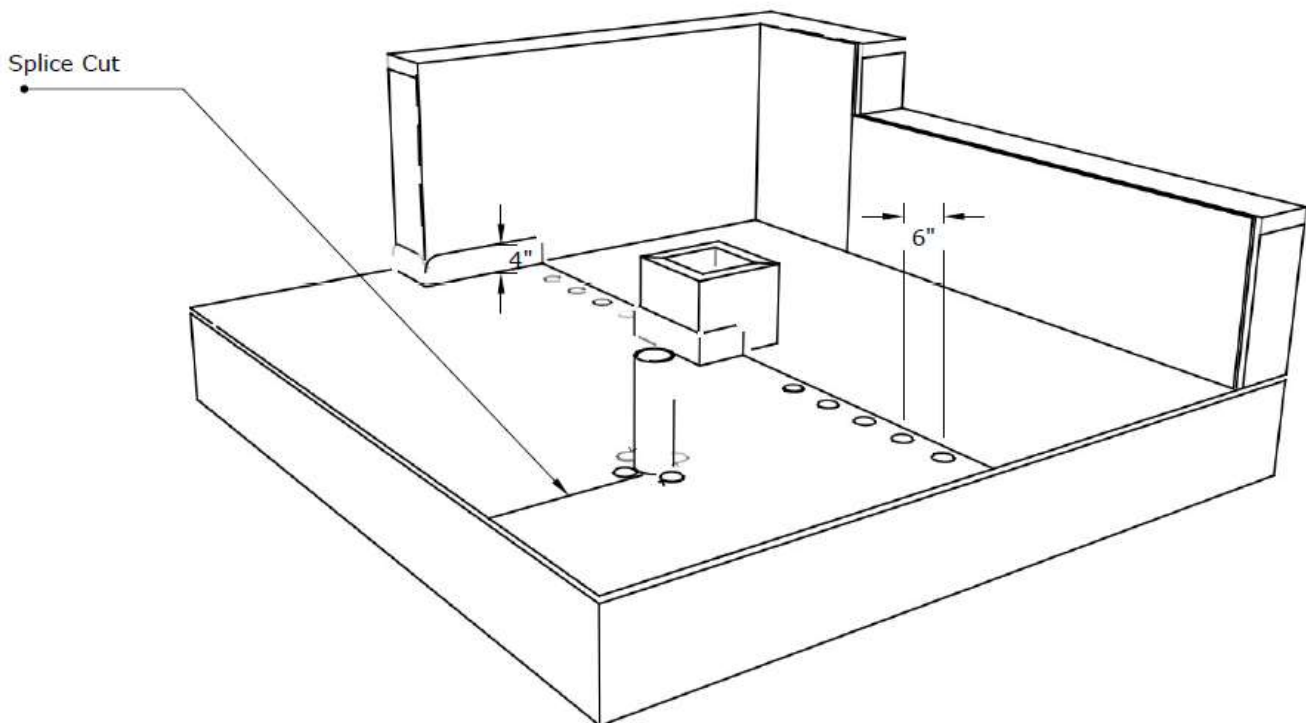
Your Qualified Assessor may ask you to demonstrate your ability to:

1. Inspect materials, tools, cords, and power supplies.
2. Inspect and clean the roof deck as needed.
3. Inspect your personal fall arrest system, put it on, and adjust the fit.
4. Wear the appropriate gloves and safety glasses during the entire exam.

Part II - Installation Assessment

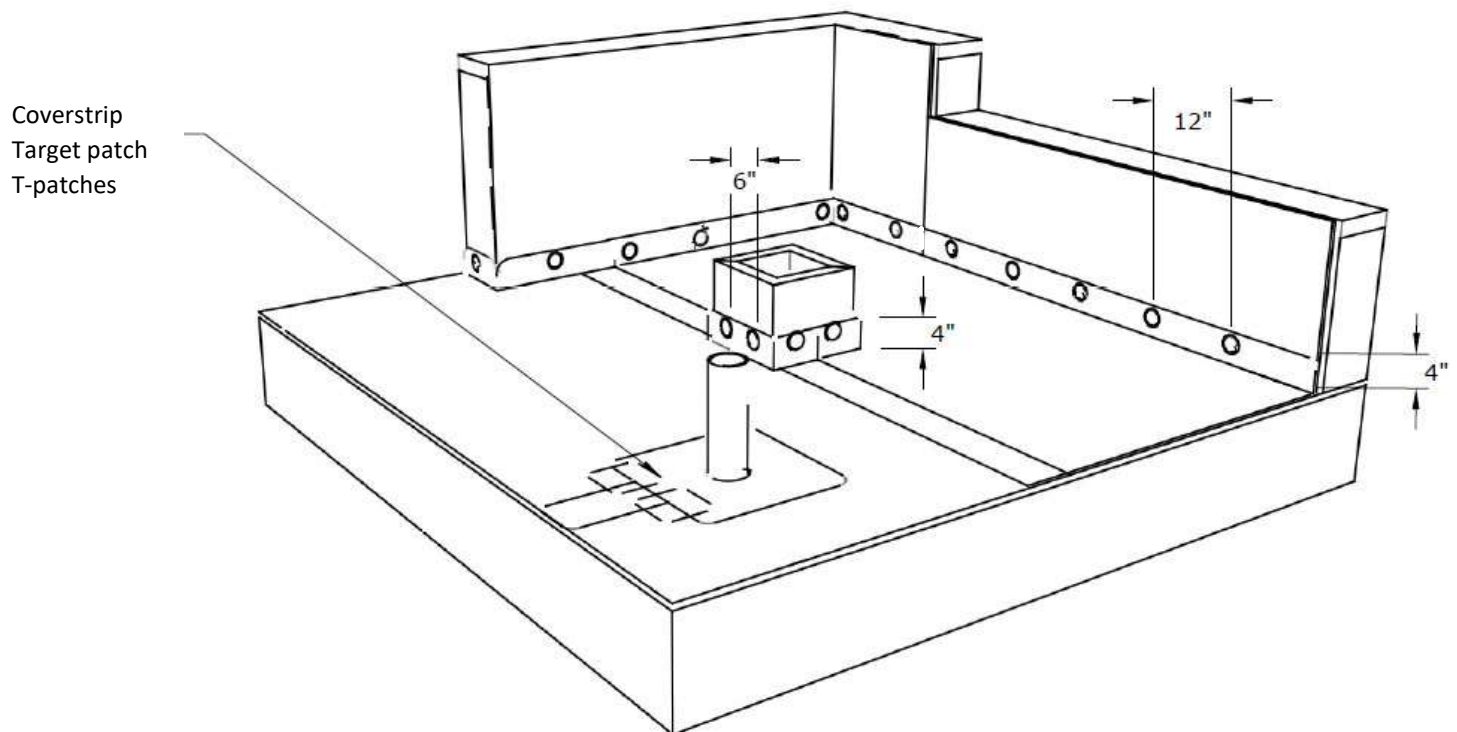
Complete these details in any order.

1. Install 2 pieces of field sheet large enough to create a 6" lap centered.
2. Splice cut the field at the plumbing vent pipe to the nearest sheet edge.
3. Fasten the field sheet around the base of the plumbing vent.
4. Fasten the field sheet lap 6" on center, and 1" from sheet edge.



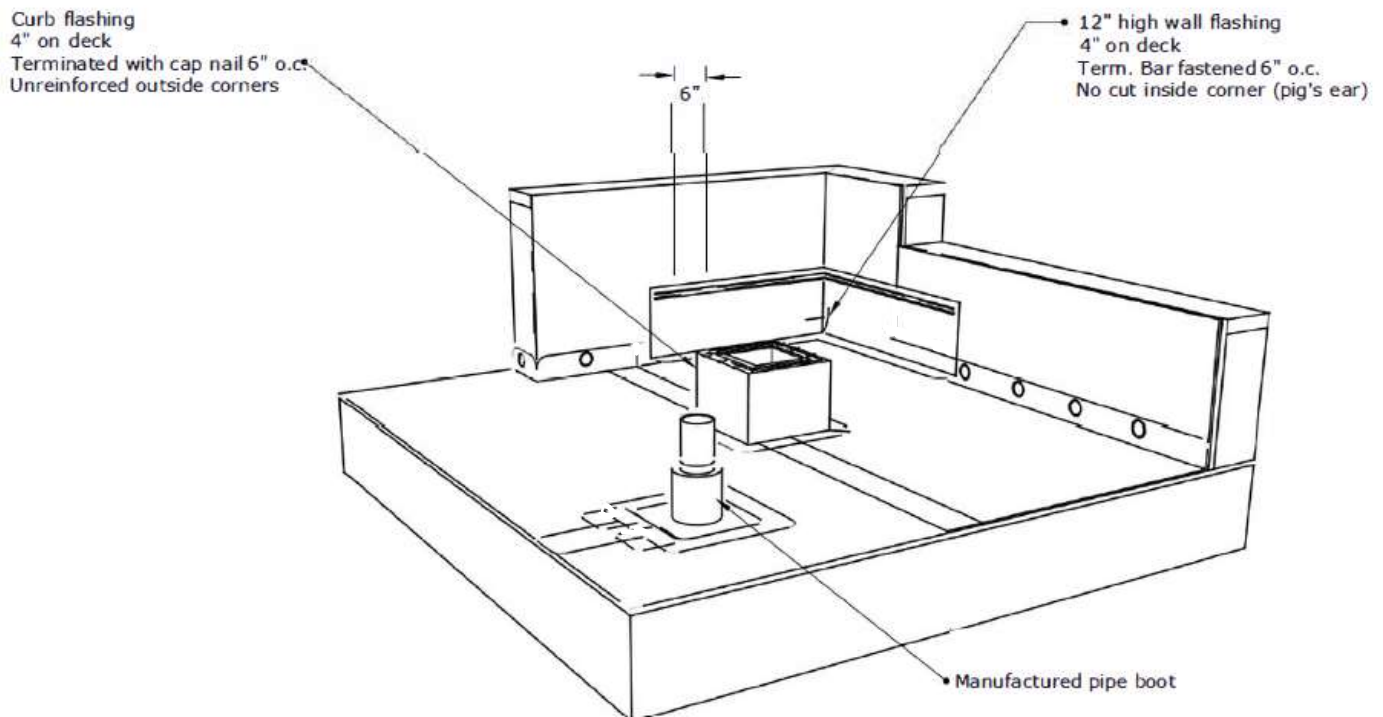
Part II – Installation Assessment Continued

5. Extend the field sheet 4" up the parapet walls and to the roof edge.
6. Fasten the field sheets to the wall 12" on center and 1" above the roof surface.
7. Extend field sheet 4" up the curb.
8. Fasten the field sheets to the curb 6" on center and 1" above the roof surface.
9. Weld a cover strip over the splice cut.
10. Install an 18"x18" target patch around the pipe.
11. Install T patches.
12. Round all corners.
13. Probe all seams.



Part II – Installation Assessment Continued

14. Adhere curb flashing around, up, and onto the top edge of the curb, with a 3" splice overlap.
15. Extend curb flashing 4" on the field.
16. Fold the curb flashing onto the top of the curb. Secure with cap nails 6" on center.
17. Weld outside corners on the walls and curb.
18. Cut all outside corners diagonally and flashed with a premanufactured corner accessory.
19. Weld a premanufactured boot at the pipe.
20. Adhere the base wall flashing to extend 12" up the walls and 4" on to field.
21. Attach upper edge of the base wall flashing with termination bar fastened 6" on center.
22. Fold all inside corners without cutting.
23. Describe for the assessor where all sealants are applied.





National Roofing Contractors Association
10255 W. Higgins Road, Suite 600
Rosemont, IL 60018-5607
(847) 299-9070
Website: www.nrca.net
Email: certification@nrca.net

Copyright © 2024. National Roofing Contractors Association (NRCA).

All rights reserved. No part of this publication may be produced or transmitted in any form or by any means, electronic or mechanical, including photocopy or recording, or any information and retrieval system, without permission in writing from NRCA.