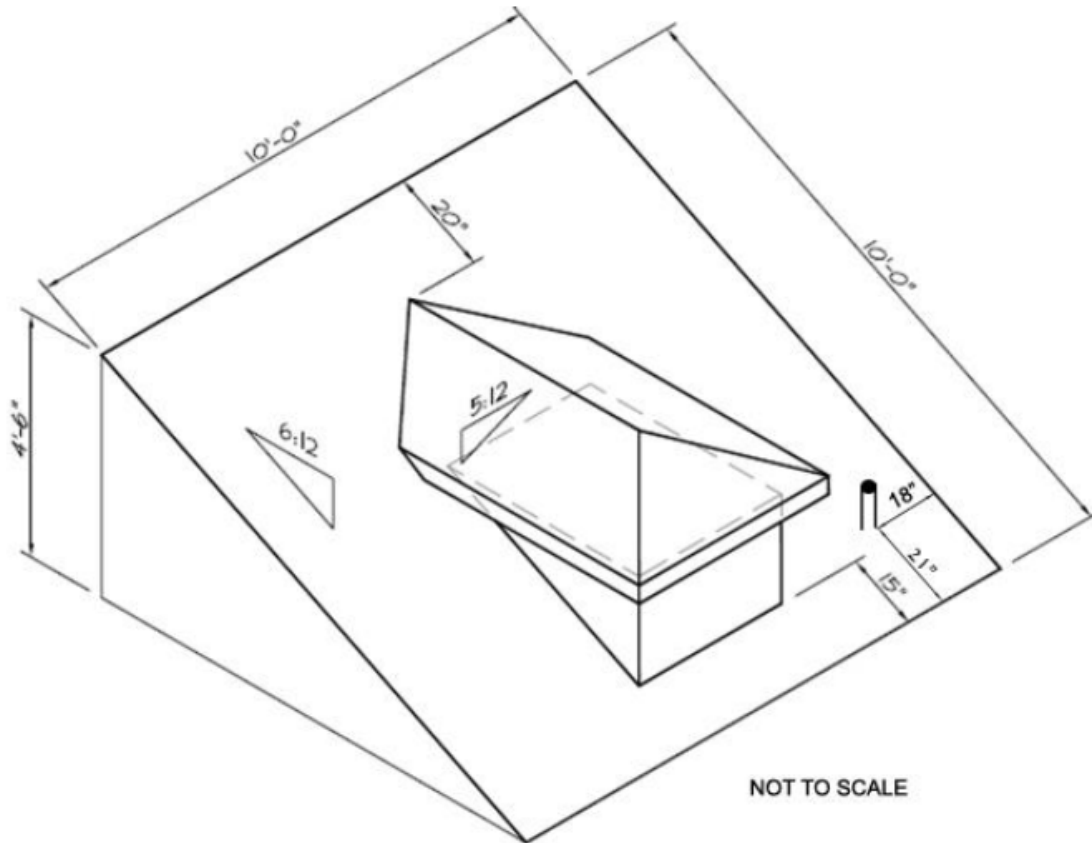




NRCA
PROCertification®

Asphalt Shingles Sample Assignment



The ProCertification® performance assessment is based on a system of points. The assessor will ask the installer to perform specific tasks commonly performed on an asphalt shingle job. A specific number of points can be earned or deducted based on the skills completed correctly, partially correctly or not completed at all.

Below is the list of tasks the assessor will ask the installer to perform on the mockup.

Part I – Personal Fall-arrest System Safety Assessment

Put on a PFAS harness and explain component functions and use. Points are earned if the installer:

- Inspects all components of the PFAS and looks for any signs of wear or damage and explains what they are looking for
- Wears the harness correctly, including adjusting chest and leg straps
- Attaches the lanyard to the harness correctly
- Attaches the rope grab to lifeline and tests the locking cam
- Explains how to adjust lifeline slack to prevent free falling more than 6 feet

Part II – Personal Protective Equipment Safety Assessment

During all tasks being completed, points will be earned if the installer:

- Wears eye protection when fastening
- Wears cut gloves when cutting

Part III – Skills Assessment

Install metal edge flashing at an eave and rake edge. Points will be earned for demonstrating:

- Staggered nailing pattern, spaced equally
- Neatly cut and tightly fitted corner where eave and rake edge metal meet
- No buckles
- Rake edge metal is installed on top of underlayment

Install a single layer of self-adhering underlayment at lower eaves, valleys and around penetrations. Points will be earned for demonstrating:

- Self-adhering underlayment is turned up vertical surfaces a minimum of 4 inches
- Self-adhering underlayment is installed on top of lower eave metal edge flashing

Install underlayment. Points will be earned for demonstrating:

- Consistent side lap minimum 2 inches
- Consistent end lap minimum 4 inches
- Underlayment is wrapped over the hip
- Underlayment was cut to accommodate venting (ridge or static)

Install starter course shingles. Points will be earned for demonstrating:

- Maintained ½-inch overhang beyond the metal edge
- Correct location of the sealant strips
- Consistent fastener location as specified

Install laminate asphalt shingles. Points will be earned for demonstrating:

- Offset starter course and first shingle minimum 5 inches
- Course spacing level and parallel to downslope roof edge
- Shingles adjacent to the hip are trimmed
- Each shingle has minimum two nails placed at manufacturer-specified locations
- Nails are not overdriven or underdriven and sit straight and perpendicular to the shingle surface
- Exposure is maintained when installing around penetrations, chimney or dormer
- Shingles at rake edge are trimmed and neat
- Shingles fit tightly around penetrations

Install a closed-cut valley. Points will be earned for demonstrating:
<ul style="list-style-type: none"> • Shingles were installed first on the shorter-length slope adjoining the valley • Cut overlying shingles on the adjoining slope 2 inches short of the valley centerline • Nails are located 6 inches or more from the valley center • Two nails were placed at the end of each terminated shingle • Upper corners of overlying shingle were trimmed 1-2 inches short of center at a 45-degree angle • Applied continuous bead of roof cement under ends of cut valley shingles
Install flashing around the vent pipe penetration. Points will be earned for demonstrating:
<ul style="list-style-type: none"> • Shingles are cut accurately and neatly around the penetration • Upslope flashing flange is placed under the underlayment or has been stripped in with self-adhering underlayment • Downslope flashing flange is extended a minimum of 2 inches over double-shingle coverage below • Shingles were nailed a minimum of 8 inches above the pipe penetration • Sealant was applied to any exposed flange nails
Install dormer headwall flashing. Points will be earned for demonstrating:
<ul style="list-style-type: none"> • Double-shingle coverage extends up to the headwall and shingles are tightly trimmed • Apron flashing is tightly fitted • Vertical leg of the flashing are folded around the dormer corners a minimum of 2 inches • Sealant was applied at apron flashing corners • Apron flashing was attached using screw fasteners
Install metal step flashings. Points will be earned for demonstrating:
<ul style="list-style-type: none"> • Installed in the correct sequence to receive metal apron flashing components • Step flashings are fitted tightly • Sealant is applied at corners under step flashing • Lower edge of the step flashing is even with lower edge of shingle course • One nail is attaching the step flashing near its upper outside corner • Shingle courses are cut tight and maintain double coverage
Install hip and ridge cap. Points will be earned for demonstrating:
<ul style="list-style-type: none"> • Hip and ridge shingles are straight (used chalk line as guide) • Attached each shingle with two nails at correct locations • Overlaps do not exceed maximum exposure • Nails are driven flush and tight, straight and true • Sealant has been applied to any exposed nails
Install continuous ridge vent. Points will be earned for demonstrating:
<ul style="list-style-type: none"> • Ridge vent material is set back 12 inches from any tie-in points