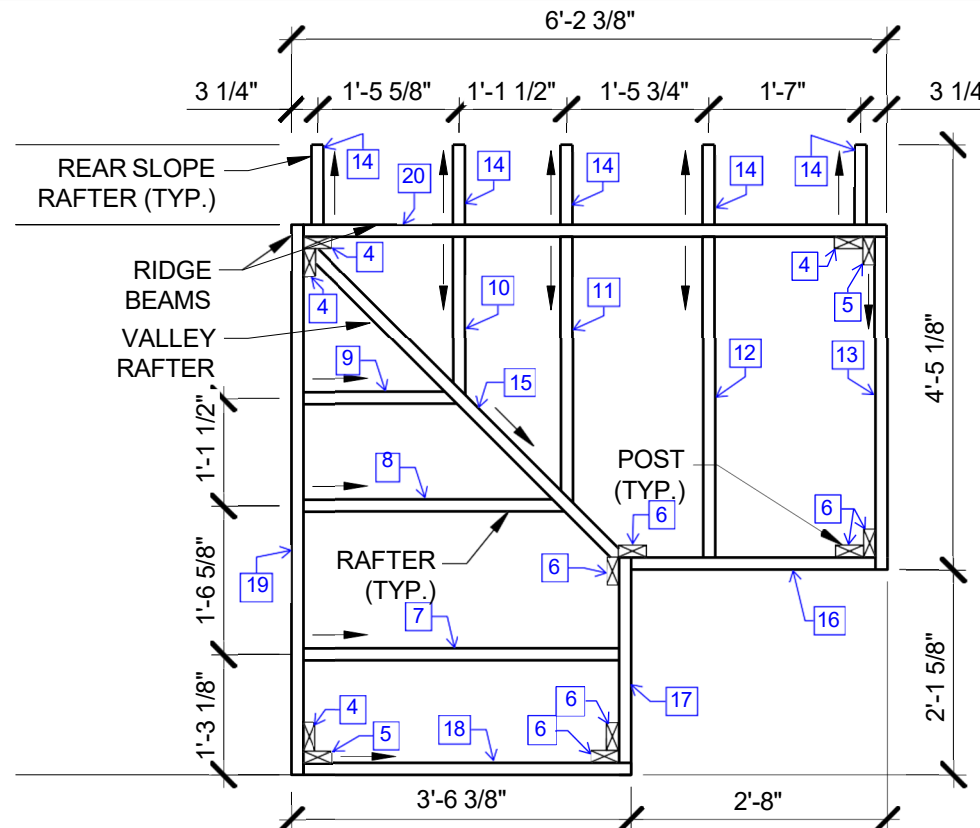


1 ROOF PLAN
1/2" = 1'-0"



2 ROOF FRAMING PLAN
1/2" = 1'-0"

PARTS LIST (SHEET A-1)

PART NO.	QUANTITY	DESCRIPTION	SIZE*
1	1	PLYWOOD ROOF DECKING	5/8" X 4' x 5'-8"***
2	1	PLYWOOD ROOF DECKING	5/8" X 4' x 6'-3"***
3	1	PLYWOOD ROOF DECKING	5/8" X 1' x 6'-3"
4	4	POST	2X4 X 3'-8"
5	2	POST	2X4 X 3'-6 1/4"
6	6	POST	2X4 X 1'-11 3/8"
7	1	RAFTER	2X4 X 3'-9 3/4"
8	1	RAFTER	2X4 X 3'-2 1/4"
9	1	RAFTER	2X4 X 1'-11 1/8"
10	1	RAFTER	2X4 X 2'-0"
11	1	RAFTER	2X4 X 3'-3"
12	1	RAFTER	2X4 X 3'-10 5/8"
13	1	RAFTER	2X4 X 4'-0 1/4"
14	5	REAR SLOPE RAFTER	2X4 X 0'-10 7/8"
15	1	VALLEY RAFTER	2X4 X 4'-10"
16	1	JOIST	2X4 X 2'-6 1/2"
17	1	JOIST	2X4 X 2'-3 1/8"
18	1	RAFTER	2X4 X 3'-11 1/2"
19	1	RIDGE BEAM	2X4 X 5'-8 3/4"
20	1	RIDGE BEAM	2X4 X 6'-0 7/8"
21	1	JOIST	2X4 X 3'-0 3/8"
22	1	JOIST	2X4 X 5'-5 3/4"
23	1	JOIST	2X4 X 5'-9 3/8"
24	1	JOIST	2X4 X 3'-1 1/8"
25	2	FRAMING FOR PIPE PENETRATION	2X4 X 3'-4 1/8"
26	5	REAR SLOPE ANGLED BRACE	2X4 X 1'-10 5/8"
27	1	PLYWOOD SIDEWALL	5/8" X 9 3/8" X 4'-3 1/4"
28	1	PLYWOOD HEADWALL	5/8" X 3'-0" X 2'-0"

* LONGEST DIMENSIONS INDICATED; SEE DRAWINGS FOR SHAPES, BEVEL CUTS, PLUMB CUTS, ETC.

** DO NOT ALTER 4-FOOT DIMENSION.

ALL DIMENSIONS APPROXIMATE. ACTUAL DIMENSIONS MAY HAVE TO BE ADJUSTED TO ACCOUNT FOR FIELD CONDITIONS, LUMBER IRREGULARITIES, AND FIT UP OF PIECES.

LEGEND

- SLOPE DIRECTION
- PART NUMBER

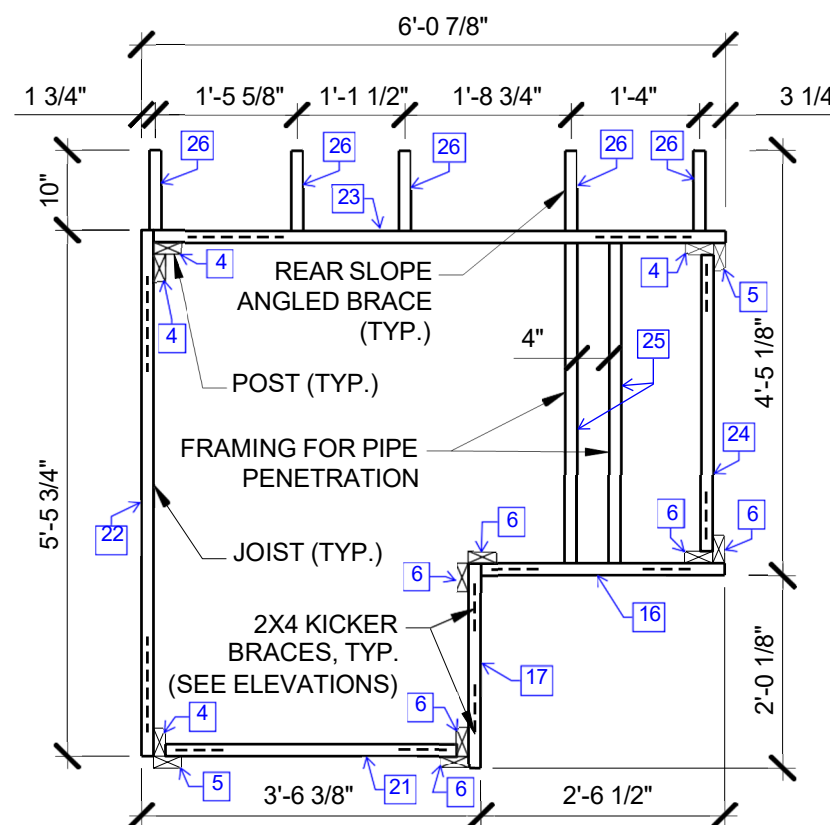
GENERAL NOTES

FASTENERS FOR FRAMING MEMBERS

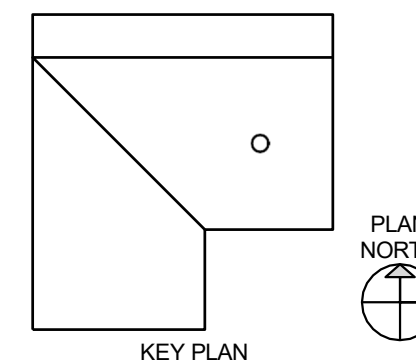
MIN. 10D, 9 GA. (0.148") X 3" LONG, SMOOTH-SHANK COMMON NAILS. MIN. 2 PER JOINT.

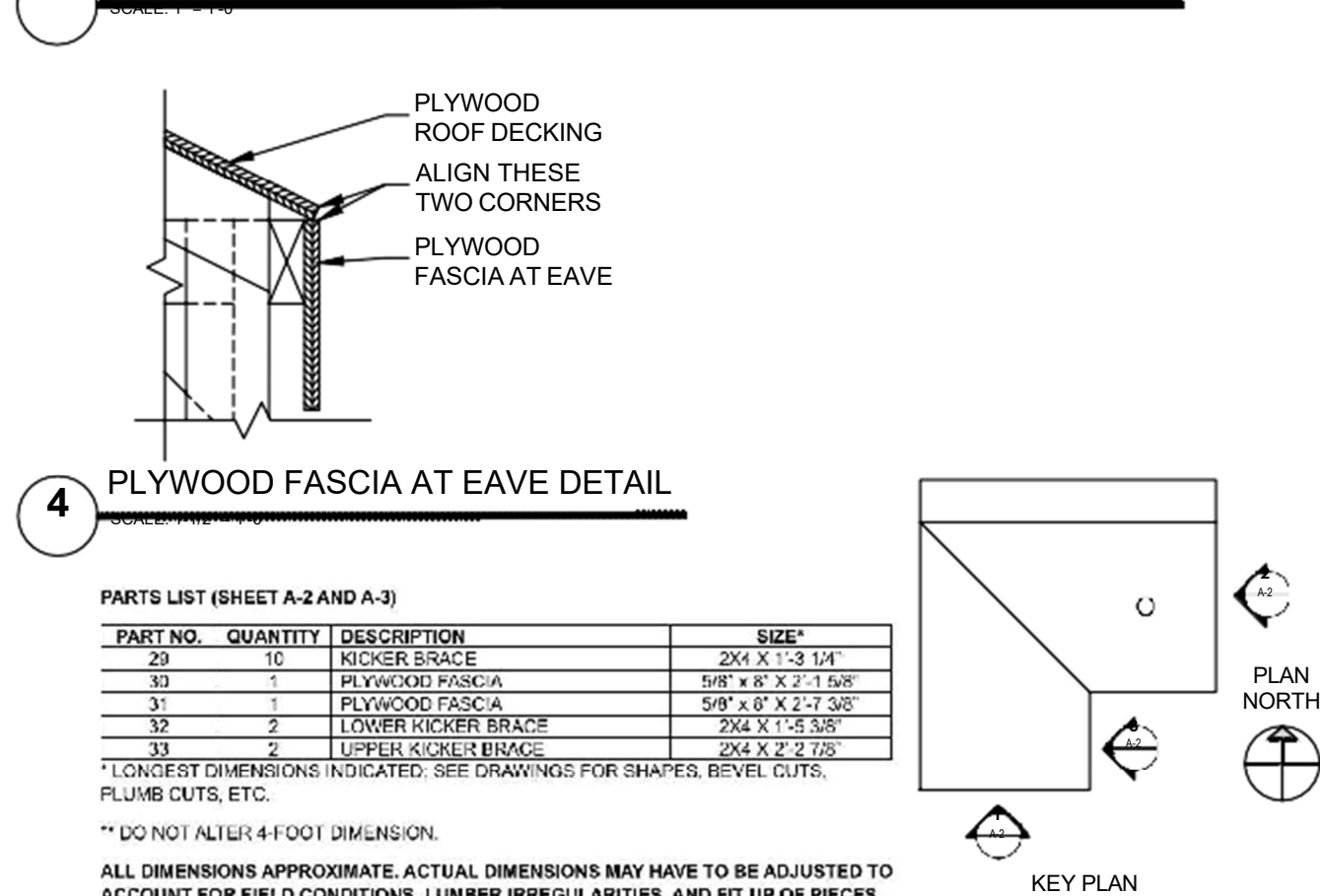
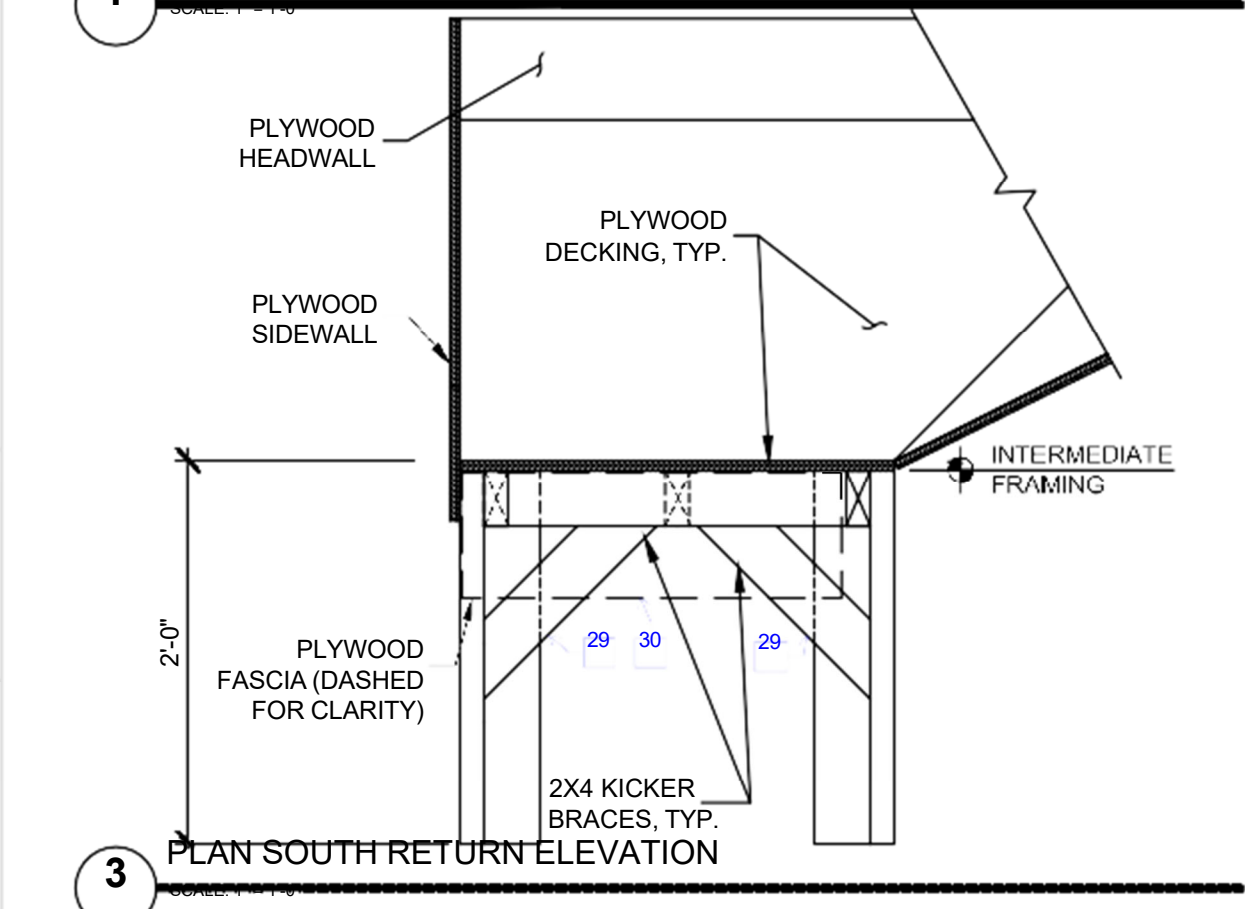
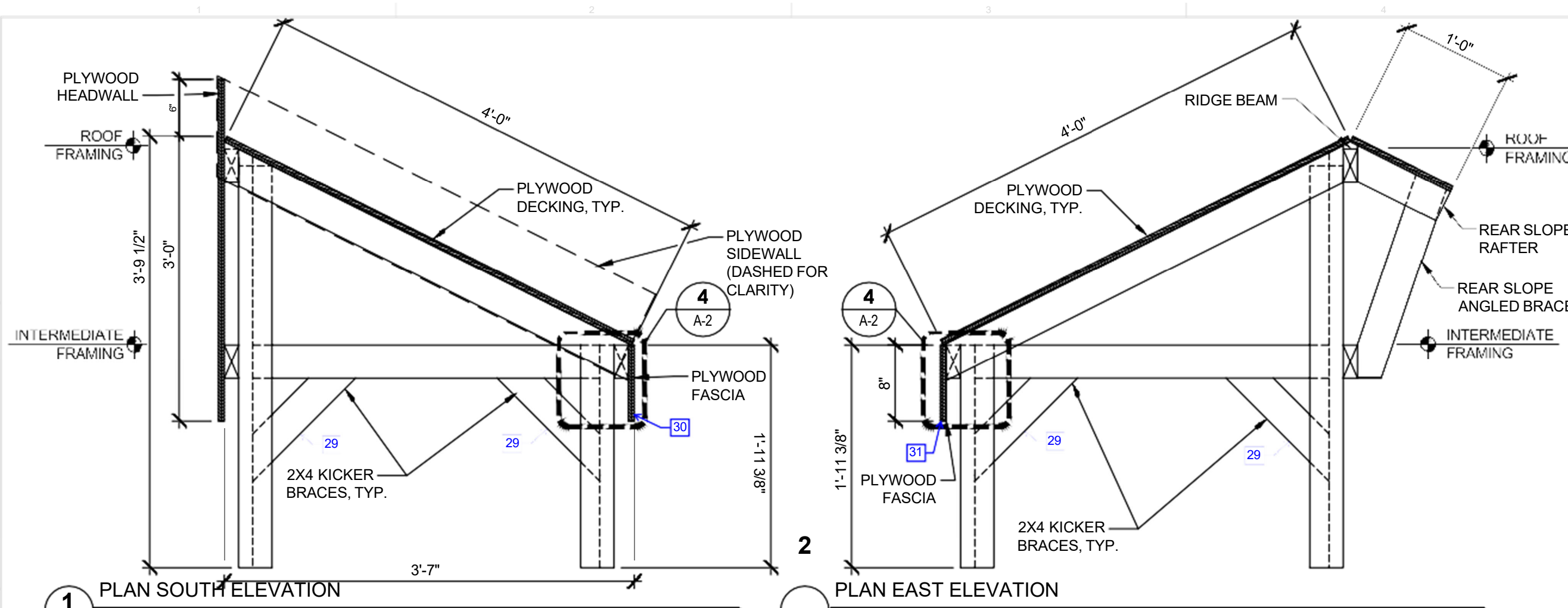
FASTENERS FOR PLYWOOD DECKING

MIN. 6D, 11 GA. (0.120") X 2" LONG, GALVANIZED RING-SHANK NAIL, OR MIN. #10 X 2-1/2" DECK-DRIVE DSV WOOD SCREW BY SIMPSON STRONG-TIE SPACED AT 12" O.C., MAX.



3 INTERMEDIATE FRAMING PLAN
1/2" = 1'-0"





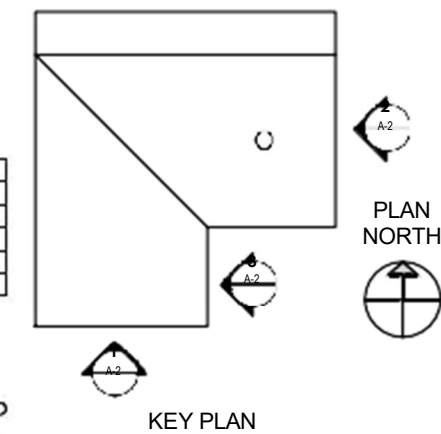
PARTS LIST (SHEET A-2 AND A-3)

PART NO.	QUANTITY	DESCRIPTION	SIZE*
29	10	KICKER BRACE	2X4 X 1'-3 1/4"
30	1	PLYWOOD FASCIA	5/8" x 8" X 2'-1 5/8"
31	1	PLYWOOD FASCIA	5/8" x 8" X 2'-7 3/8"
32	2	LOWER KICKER BRACE	2X4 X 1'-5 3/8"
33	2	UPPER KICKER BRACE	2X4 X 2'-2 7/8"

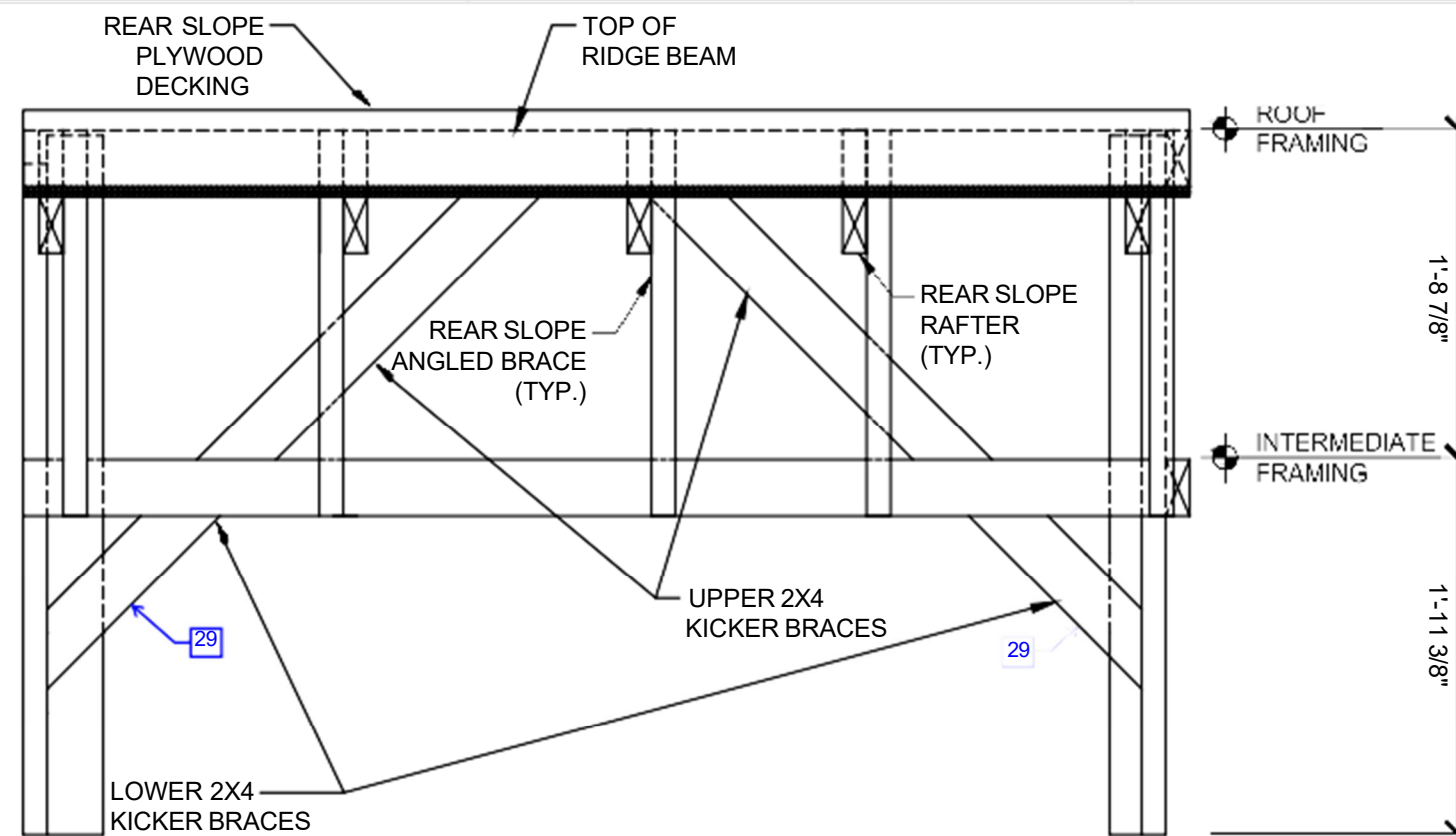
* LONGEST DIMENSIONS INDICATED; SEE DRAWINGS FOR SHAPES, BEVEL CUTS, PLUMB CUTS, ETC.

** DO NOT ALTER 4-FOOT DIMENSION.

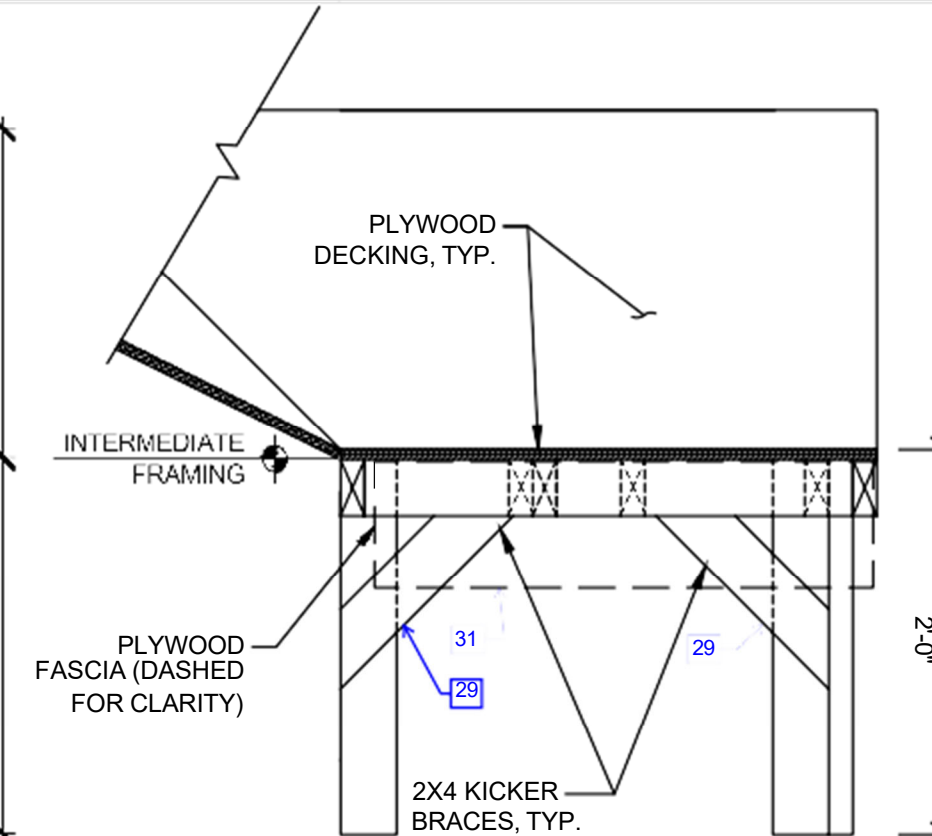
ALL DIMENSIONS APPROXIMATE. ACTUAL DIMENSIONS MAY HAVE TO BE ADJUSTED TO ACCOUNT FOR FIELD CONDITIONS, LUMBER IRREGULARITIES, AND FIT UP OF PIECES.



© Copyright 2023. All rights reserved. No part of this document may be reproduced in any form or by any means without permission from Willis, Jamey, Elshner Associates, Inc. (WJE). WJE disclaims any responsibility for its unauthorized use.



1 PLAN NORTH ELEVATION
SCALE: 1" = 1'-0"



2 PLAN EAST RETURN ELEVATION
SCALE: 1" = 1'-0"

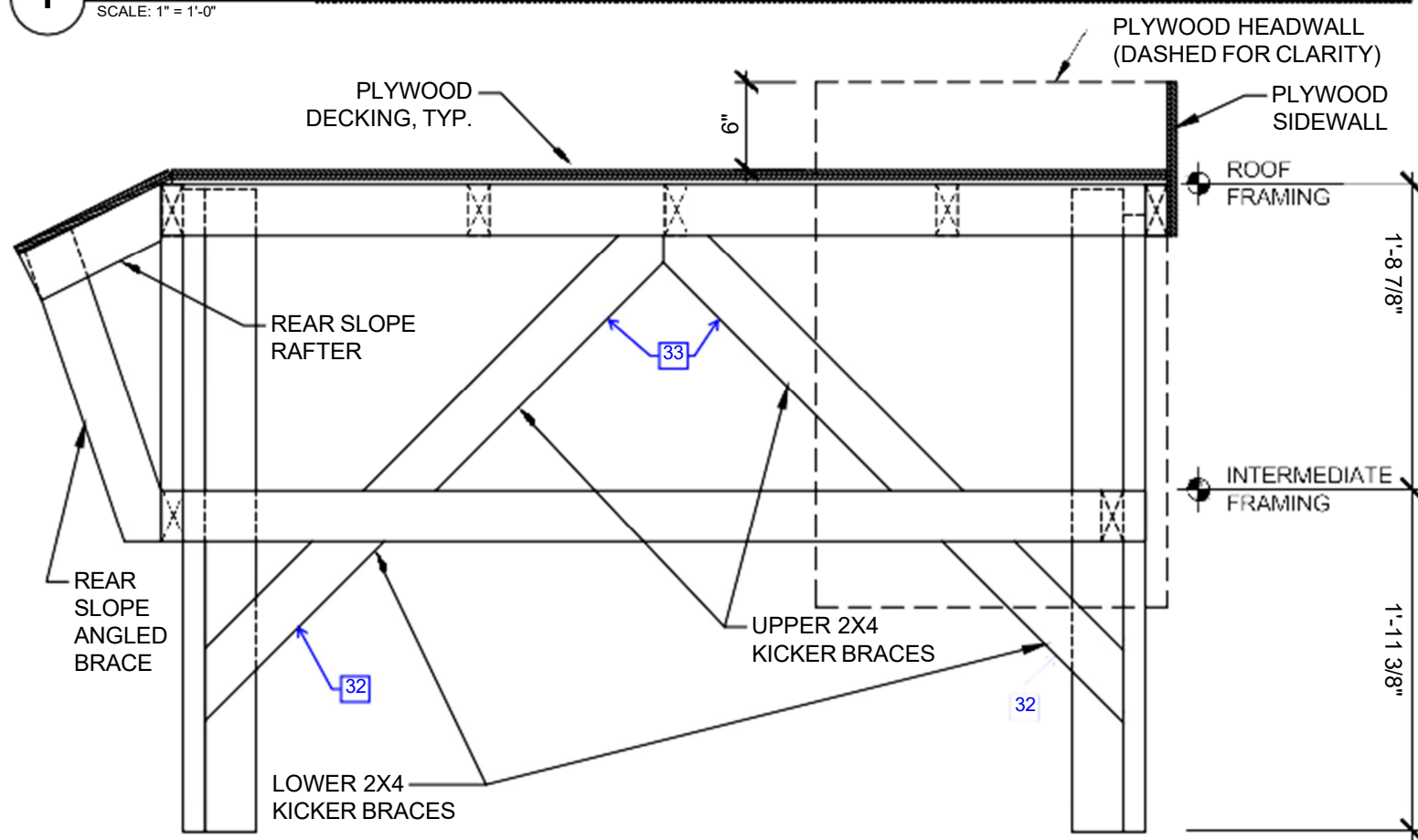
PARTS LIST (SHEET A-2 AND A-3)

PART NO.	QUANTITY	DESCRIPTION	SIZE*
29	10	KICKER BRACE	2X4 X 1'-3 1/4"
30	1	PLYWOOD FASCIA	5/8" x 8" X 2'-1 5/8"
31	1	PLYWOOD FASCIA	5/8" x 8" X 2'-7 3/8"
32	2	LOWER KICKER BRACE	2X4 X 1'-5 3/8"
33	2	UPPER KICKER BRACE	2X4 X 2'-2 7/8"

* LONGEST DIMENSIONS INDICATED. SEE DRAWINGS FOR SHAPES, BEVEL CUTS, PLUMB CUTS, ETC.

** DO NOT ALTER 4-FOOT DIMENSION.

ALL DIMENSIONS APPROXIMATE. ACTUAL DIMENSIONS MAY HAVE TO BE ADJUSTED TO ACCOUNT FOR FIELD CONDITIONS, LUMBER IRREGULARITIES, AND FIT UP OF PIECES.



3 PLAN WEST ELEVATION
SCALE: 1" = 1'-0"

